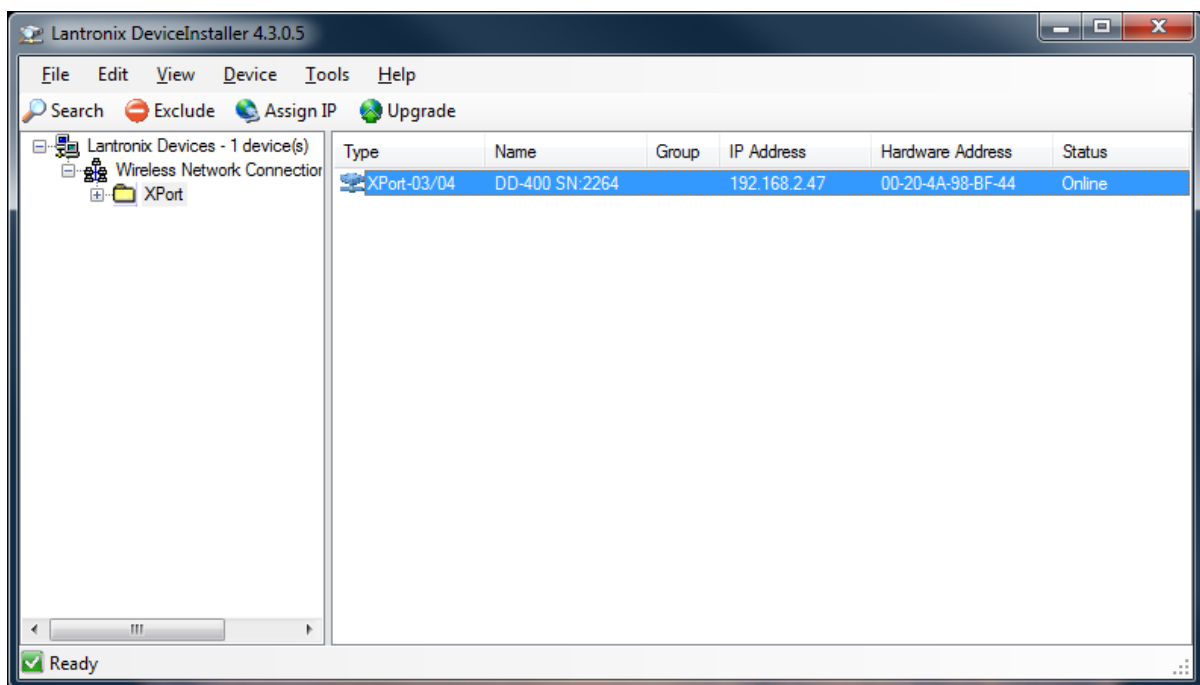


## XPort Ethernet Initial Setup

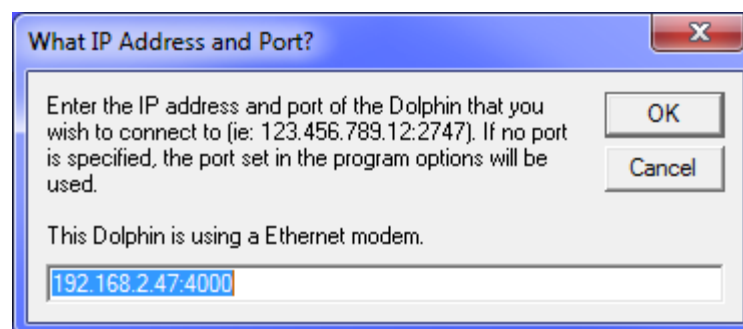
### Introduction

This guide details the configuration and management of devices using the Device Installer. It is intended for Network Administrators responsible for the configuration and maintenance of devices on the network. For the end user use Device Installer to locate the IP Address of the unit plugged into the network for use with Data Dolphin 2 software.

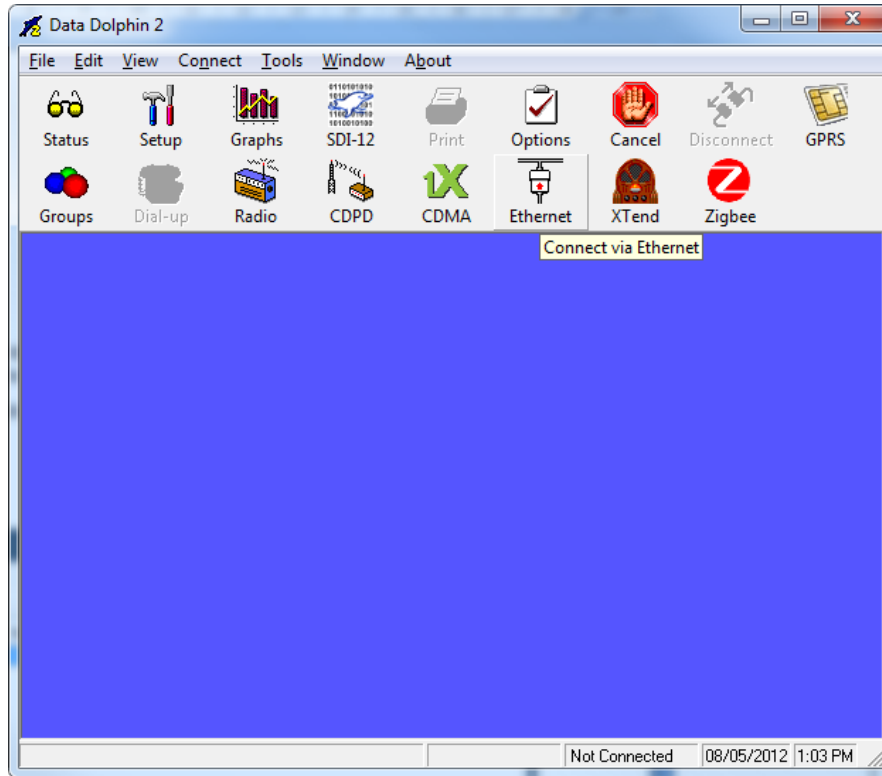
Version 4.3.0.5



As seen above the IP Address is 192.168.2.47 and the XPort is set to use port 4000. In Data Dolphin 2 use these settings to connect to the Data Logger.

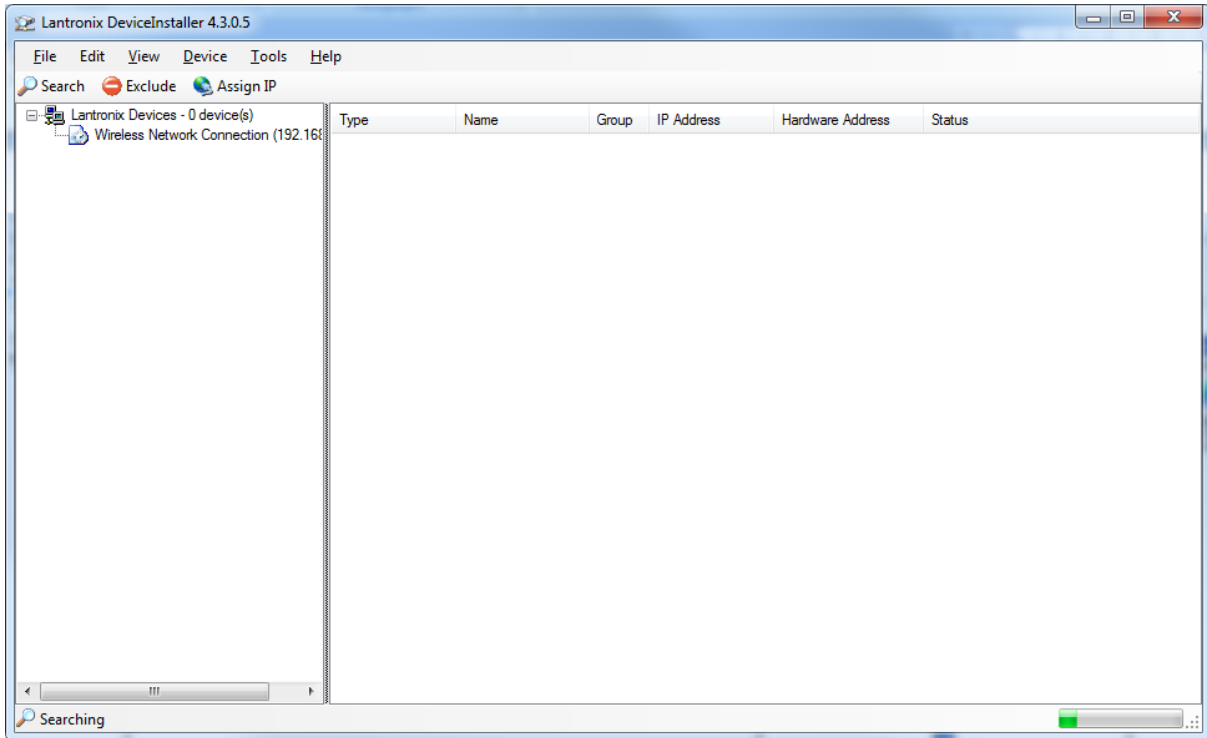


Use this Ethernet button to bring up the connection window. After it has connected press Status to see the Data Dolphin readings.

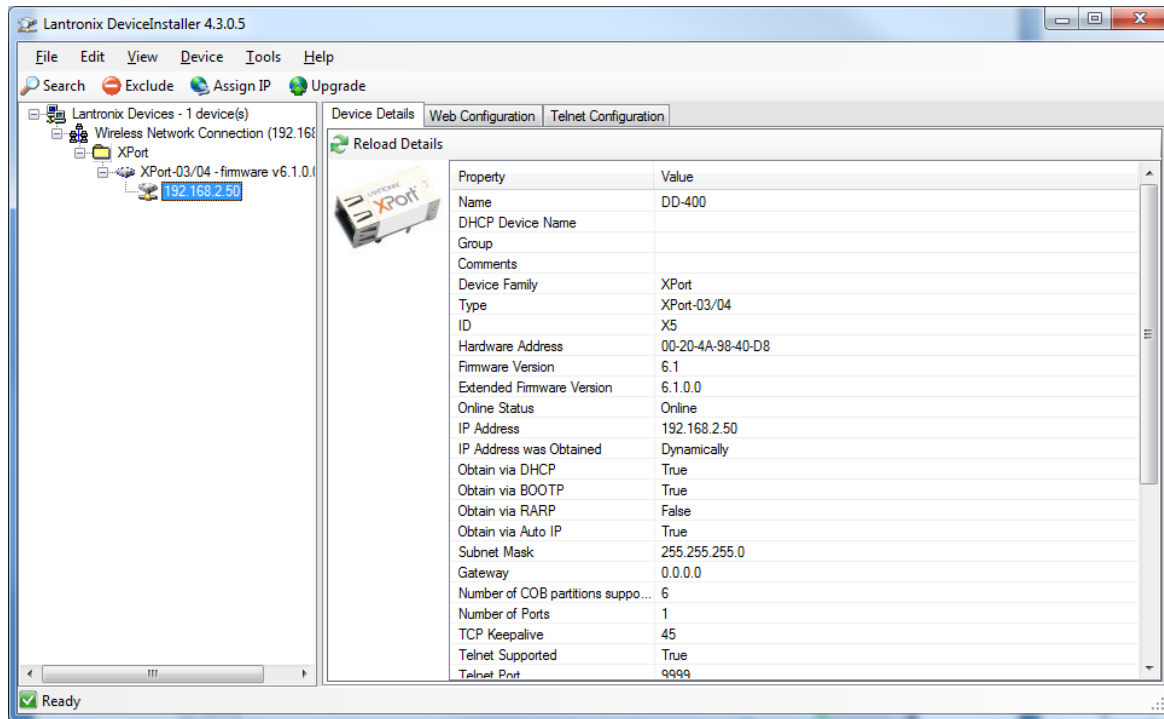


To configure a new unit, follow the screenshots on the following pages.

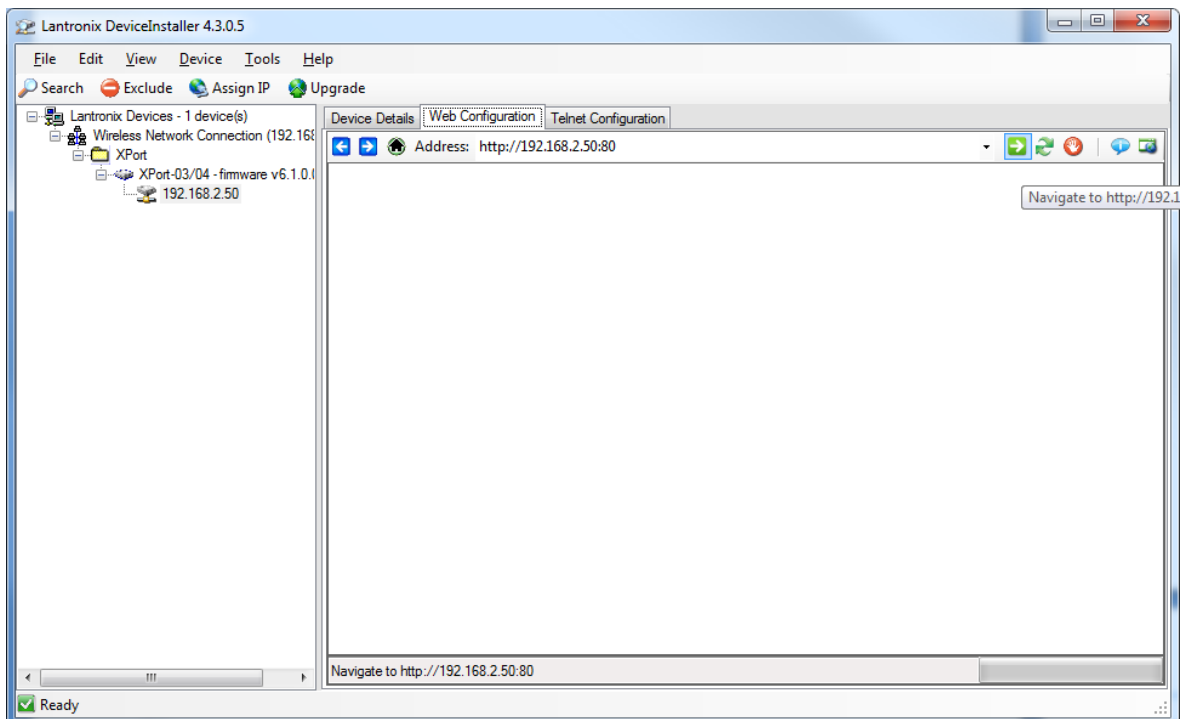
Start 'Lantronix Device Installer and click 'Search'



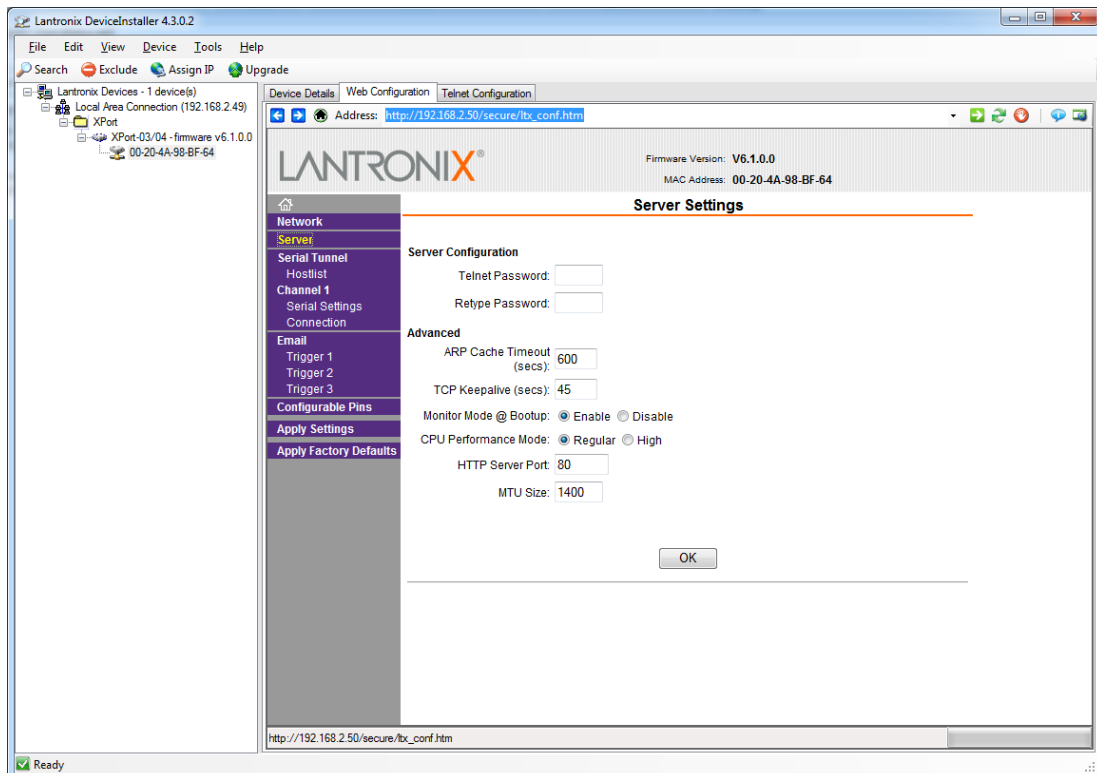
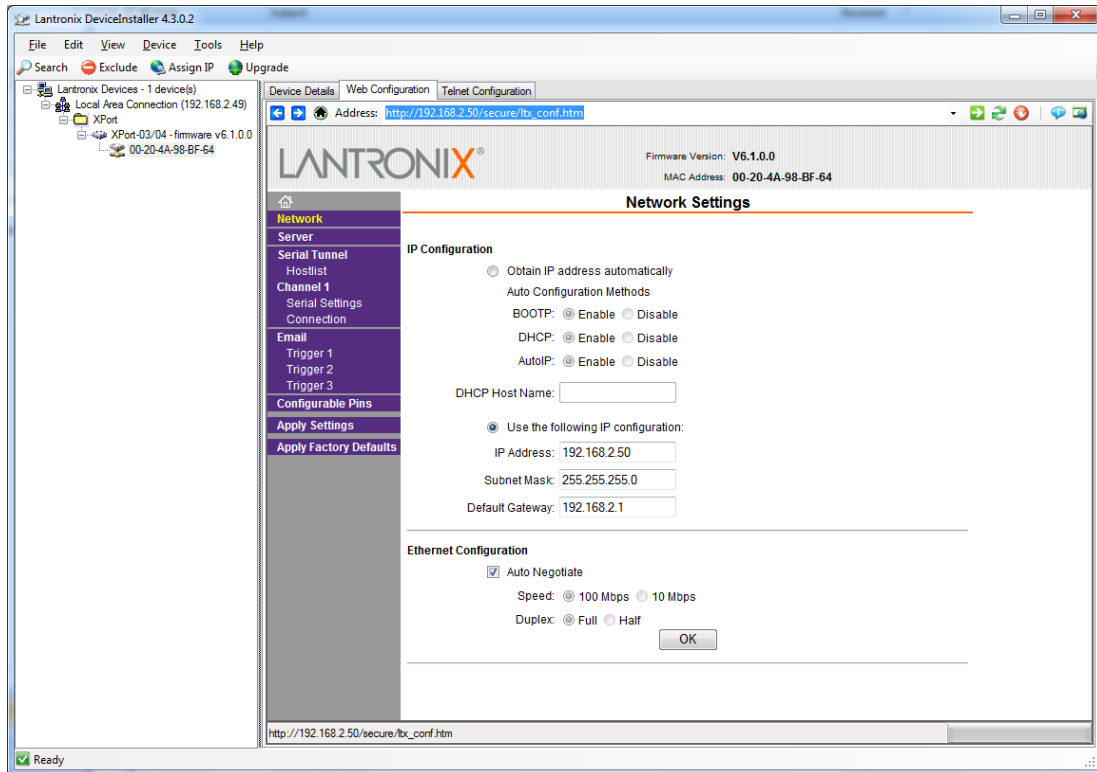
Online units will appear. Note the IP address for use with Dolphin.

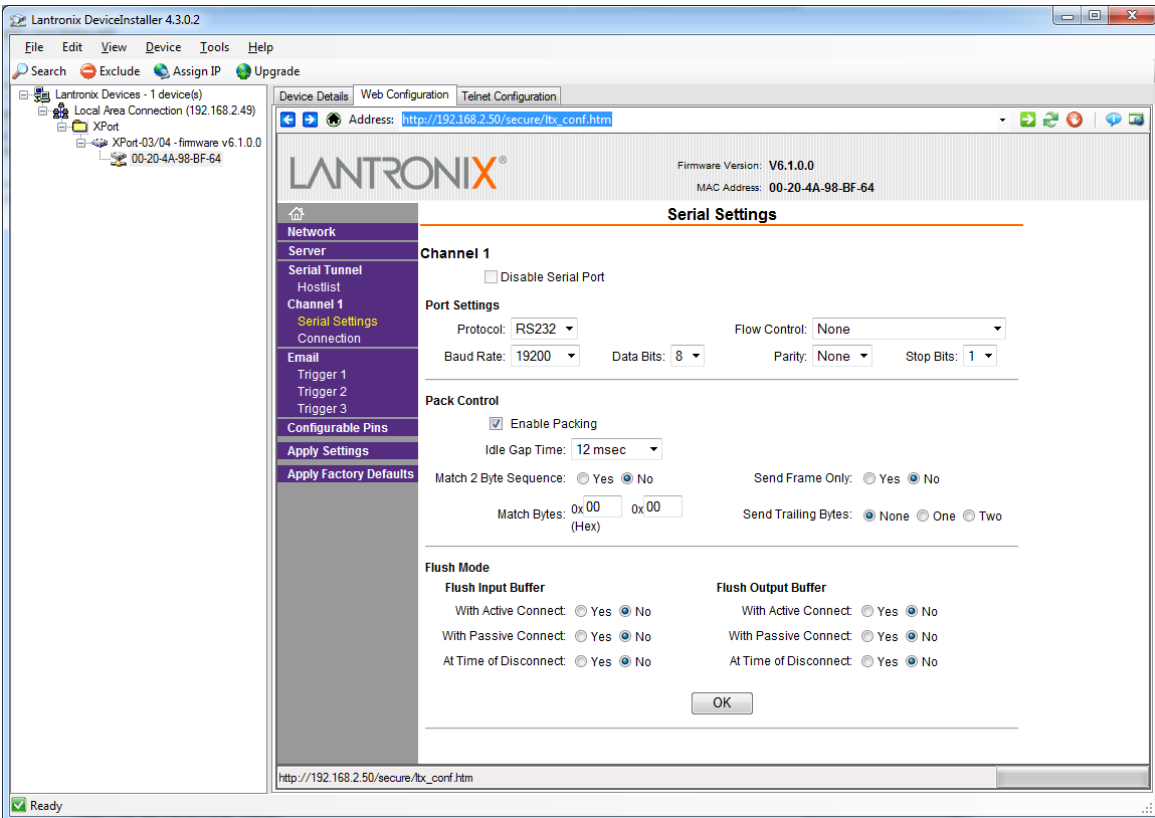
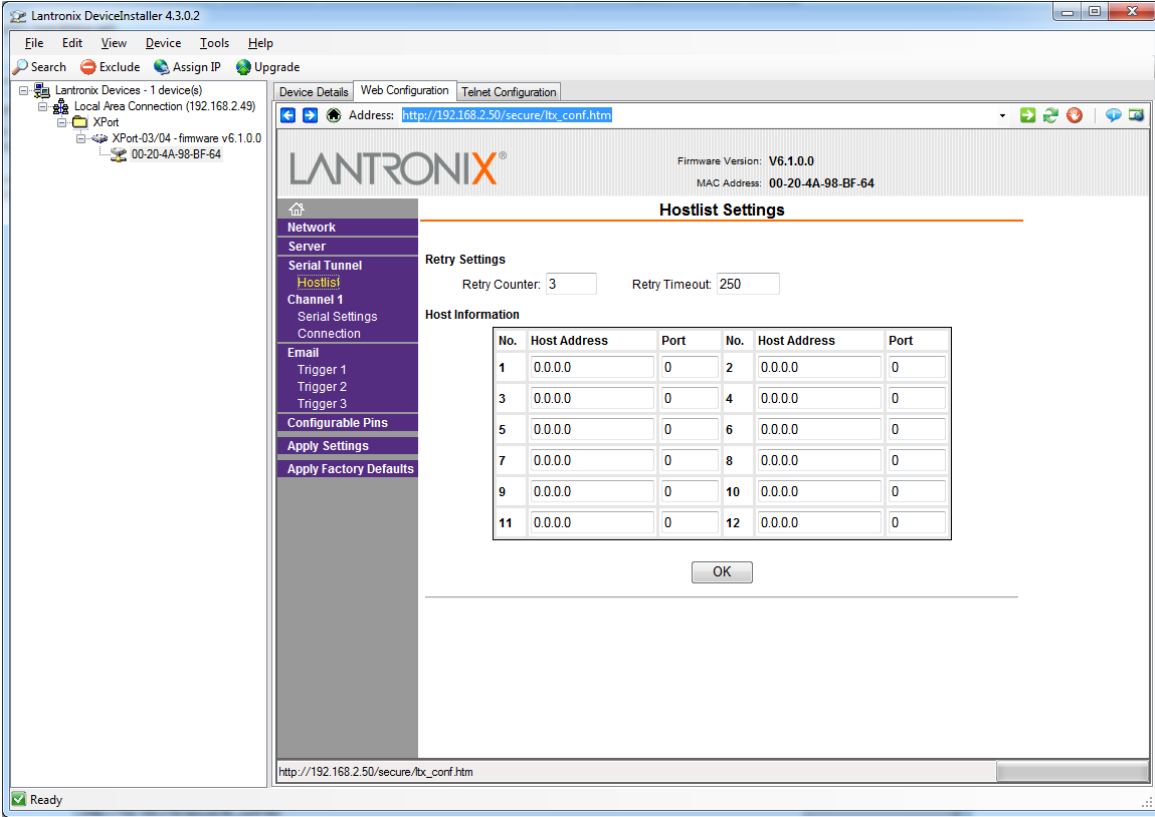


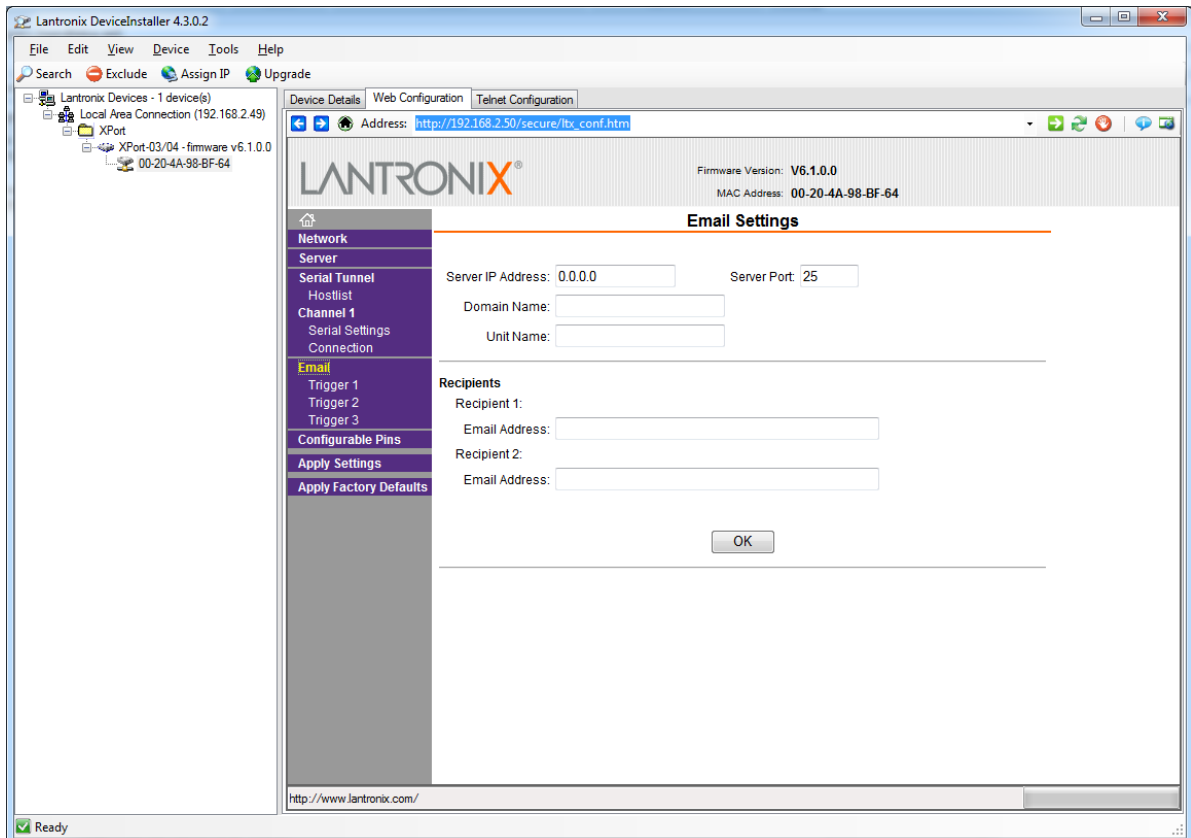
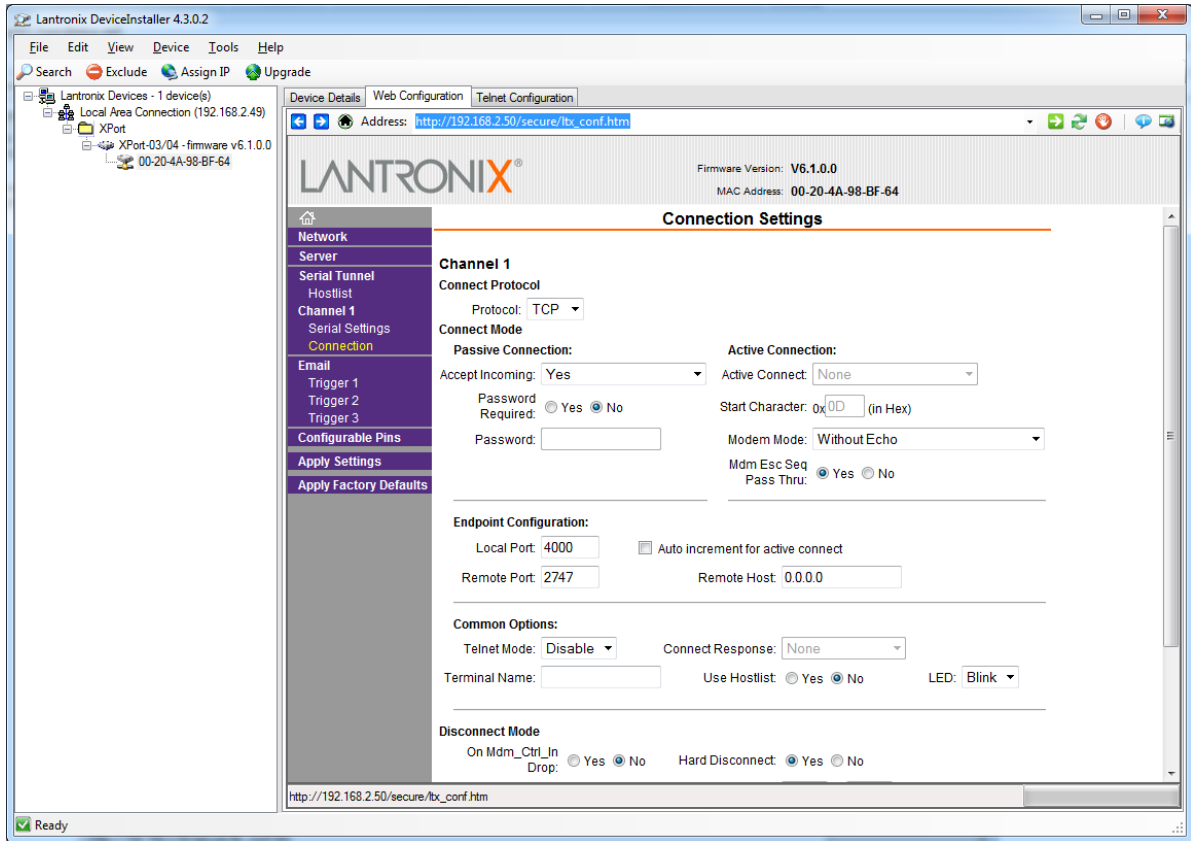
Click 'Web Configuration' and the Green Arrow

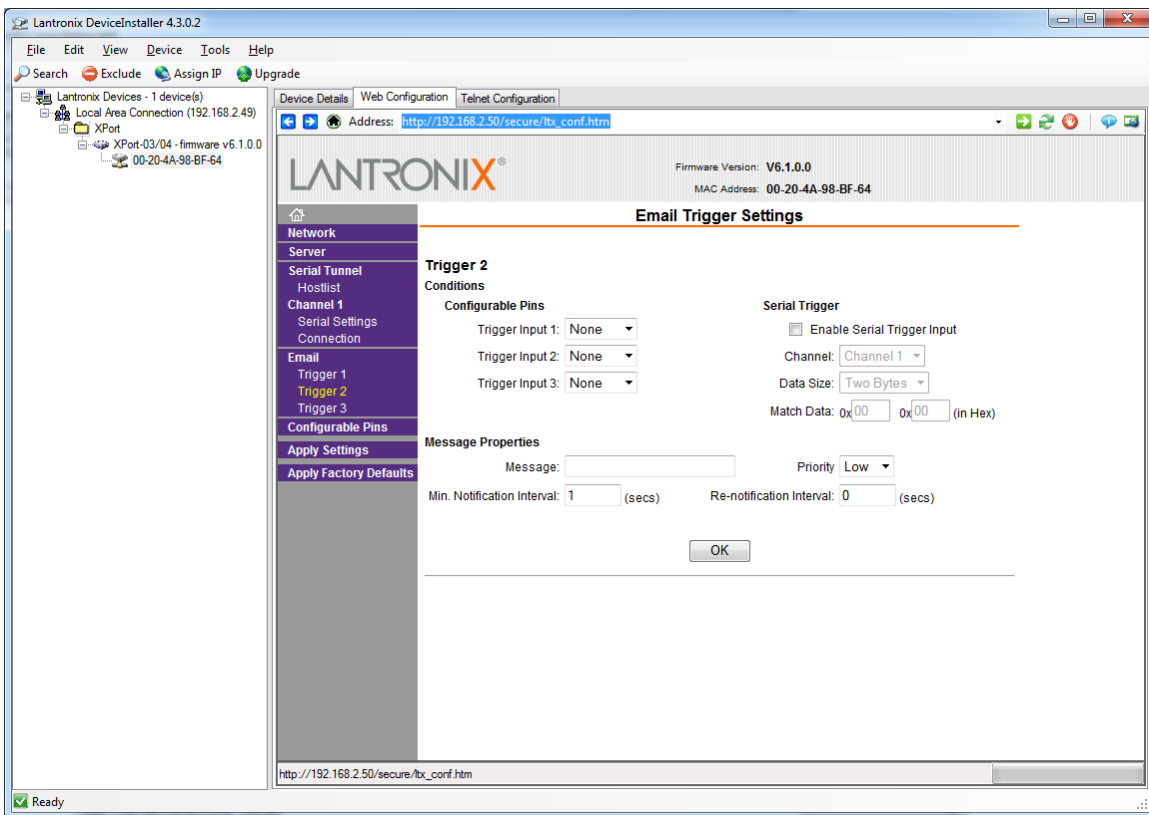
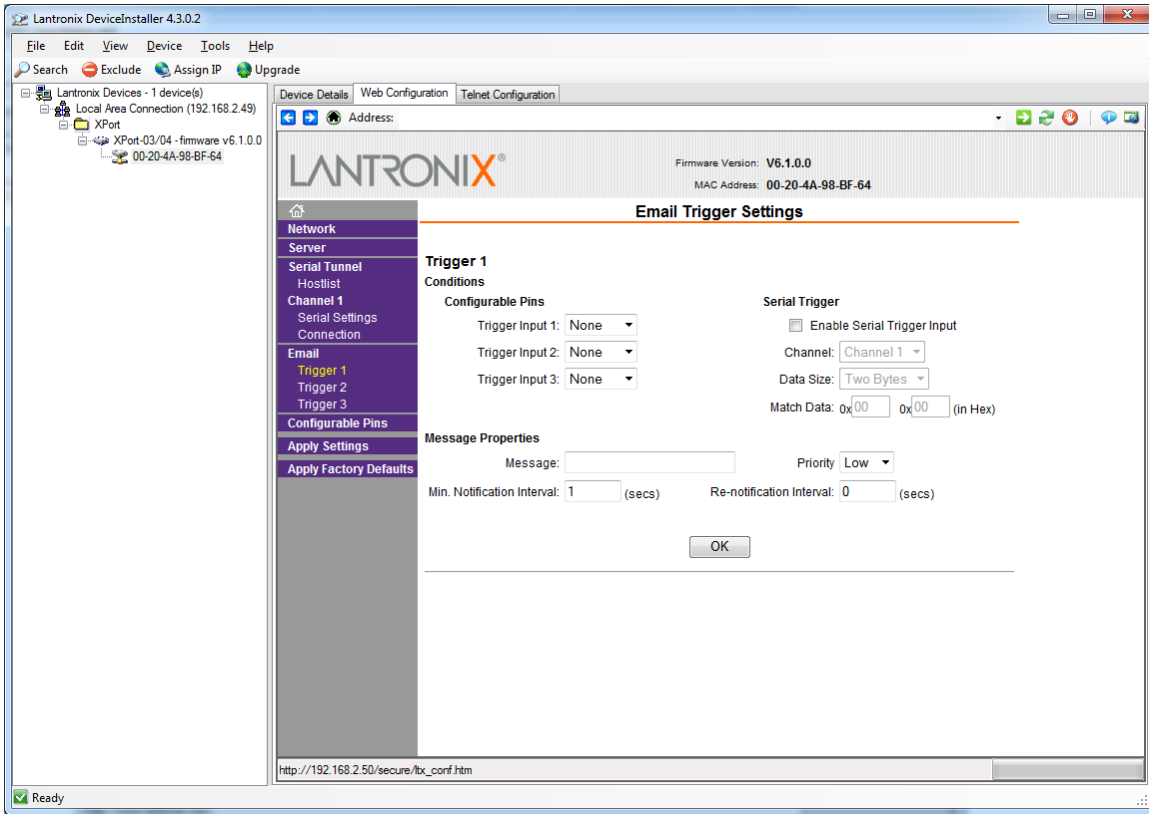


Make all of the screens match and hit OK at the bottom of each page. At the end of all of the screens press the Apply Settings button and the device will be programmed and restarted.  
If static IP is desired, this screen is where it can be set. Consult your IT department for IP.

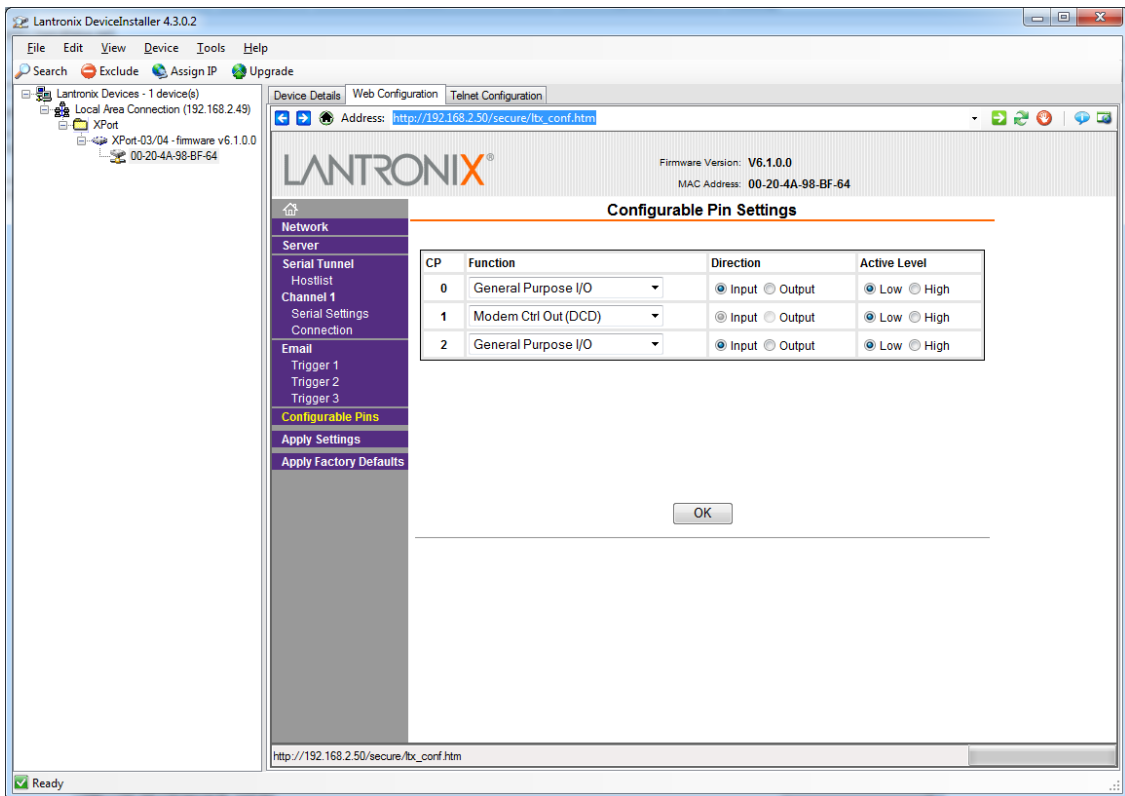
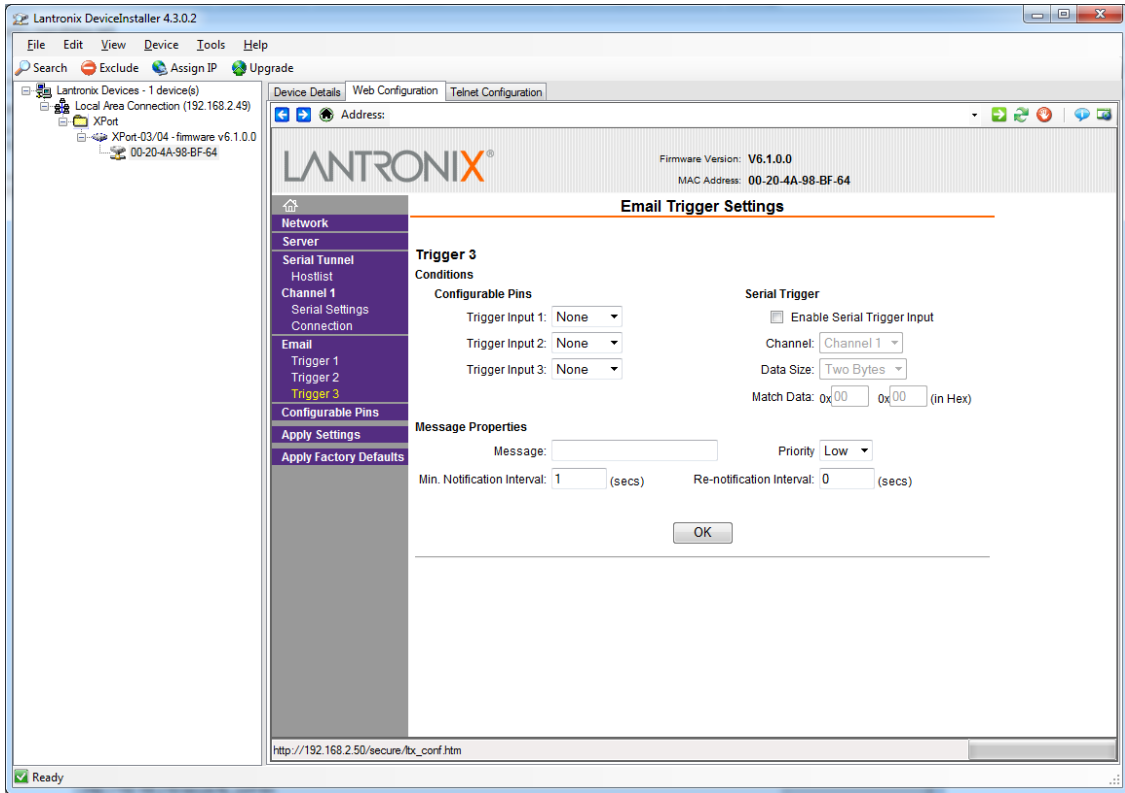












**Press Apply Settings**